

TIEDJE WOODS

Tiedje Woods is 6 ha (15 acres) of rolling deciduous forest in the Municipality of North Middlesex in Middlesex County, about 1km north of Hungry Hollow and 3 km east of Arkona in Lambton Shores. It is about a 45 minute drive west of London. Tiedje Woods lies at the south end the Ausable River Valley area of natural and scientific interest (ANSI). This scenic and steeply incised 15 km-long forested valley was formed when the glacial spillway of the Ausable River cut through the Wyoming Moraine on its way to Lake Huron.



Tiedje Woods was secured by the TTLT in 2009 through a donation from the well-known naturalists John and Dorothy Tiedje of Sarnia. The Tiedjes had purchased the land for conservation purposes about 21 years previously. Tiedje Woods contains high quality Carolinian upland forest and steep-sided ravine forest along a tributary of the Ausable River. The woodland (3 and 4 above) is at a mid-successional stage. Among the mature deciduous trees in the forest canopy are Sugar Maple, American Beech, Black Walnut, Basswood, Ironwood and Black Cherry. Towering White Ash, Red Oak and Butternut, as well as planted Blue Ash, Pawpaw, Cucumber Tree, and Redbud saplings are present. Small patches of old field/meadow (1 and 2) are reverting to bush.

A stewardship plan is being prepared to guide the long-term management of the Tiedje Woods. Management goals will likely involve improving the existing forest cover, interior forest and understorey, and enhancing aquatic habitat and slowing creek and gully erosion. Connectivity between the Tiedje Woods and contiguous wooded areas will also be improved.

Tiedje Woods has a limited and rudimentary trail system and will be open for passive day-use by the general public. As with all Land Trust properties, the recreational use of motorized vehicles, hunting and other forms of destructive activity are not allowed at Tiedje Woods.

Thames Talbot Land Trust

Subject Property:

Tiedje Woods
Part Lot 21, Con. 9 W. of Centre Rd.
West Williams Township
Middlesex County

Legend

Terranet ownership layer

Ausable River Valley Life Science ANSI

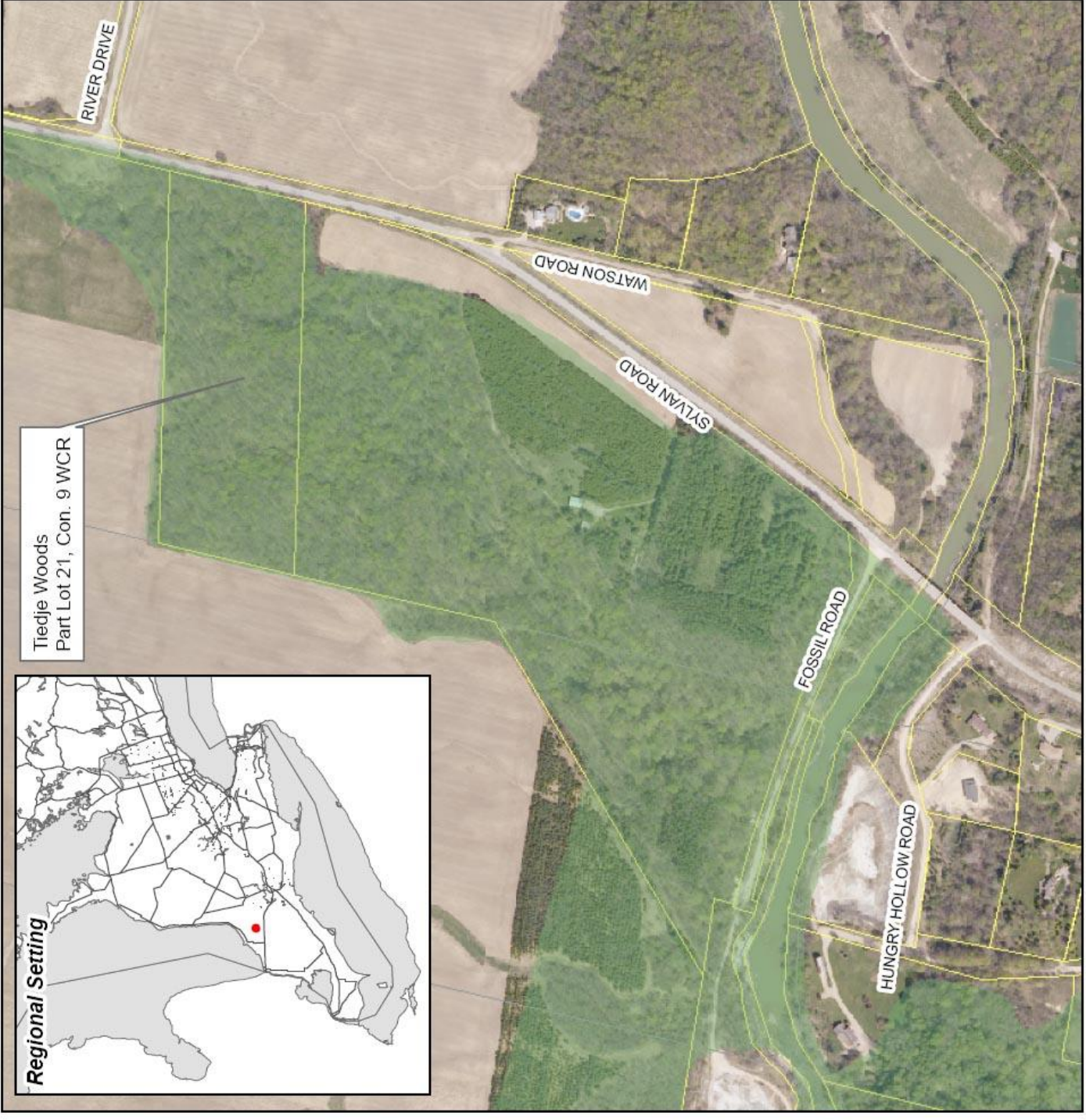


1:6,000



Aerial imagery taken in 2006.

This map is for illustrative purposes only.
Do not rely on it as being a precise indicator
of routes, locations or features nor as a guide
to navigation.



Tiedje Woods
Part Lot 21, Con. 9 WCR



Regional Setting