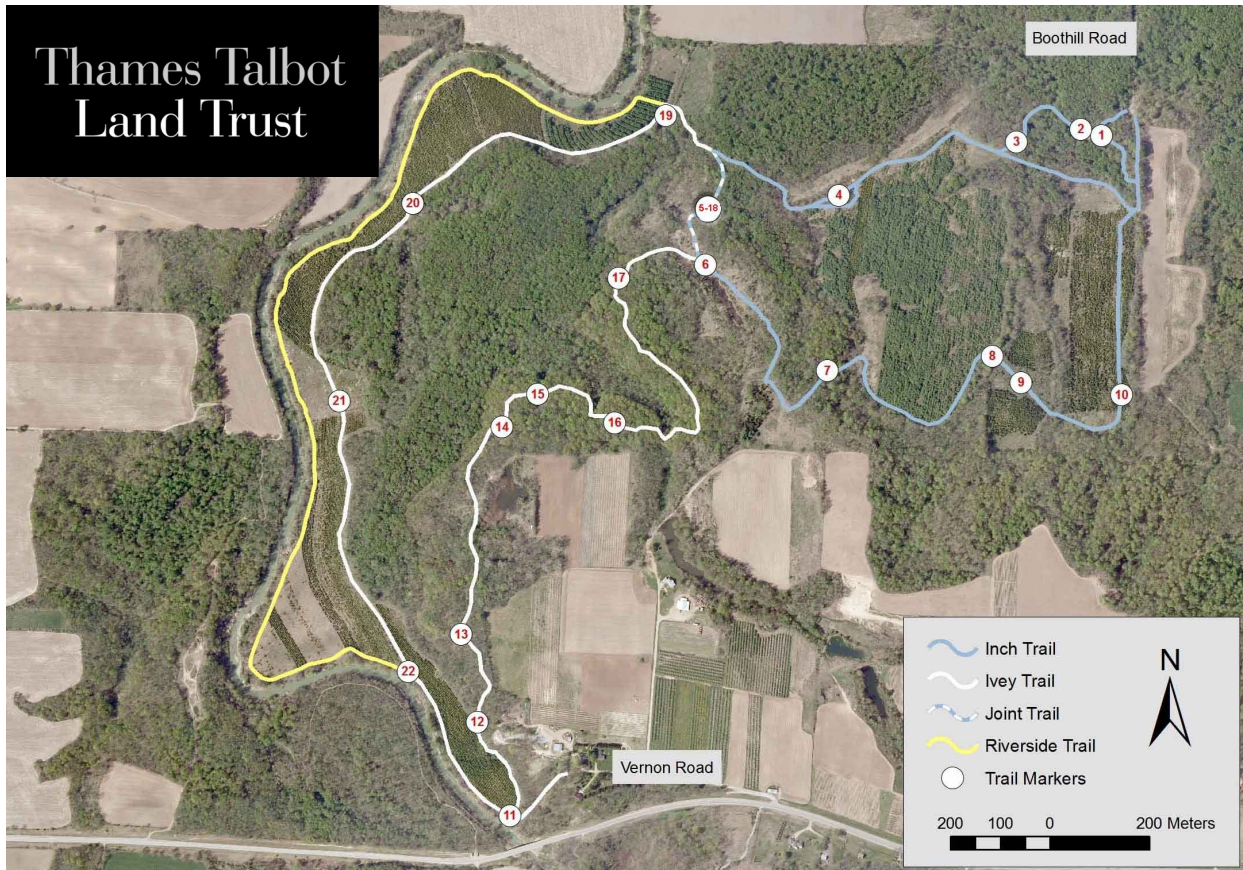


# Thames Talbot Land Trust



**Welcome to Joany's Woods.**

**The Thames Talbot Land Trust manages this significant area for conservation, public education, hiking and appreciation of its beauty and many species. We invite you to enjoy any of Joany's Woods three trails.**

**You can access the trails in Joany's Woods from the north, where parking is available off of Boothill Road. Travel to end of Vernon Road to access Joany's Woods from south.**

**The Inch trail runs 3.2 km (about 2 miles) through swamps, meadows, woodlands, shrub thickets and plantations. At a pace that allows for your own curiosity, the trail will take you about 1.5-2 hours to walk. Please be careful, some sections of the trail are rough!**

**Halfway along the Inch trail, you will overlap with the Ivey trail. This trail is approximately 4.4 km long (2.7 miles). It explores steeper slopes and a fine Carolinian forest. The Ivey trail takes about 2-2.5 hours to complete and loops south toward Vernon Road and the Elginfield Road Bridge.**

**We hope you enjoy your exploration of Joany's Woods. Please visit our website at [www.ttlc.ca](http://www.ttlc.ca) to view the interactive trail guide and to learn more about other Thames Talbot Land Trust properties.**

**Please respect the hiker's code of ethics and leave Joany's Wood's in the same or better condition than you find it.**

**"Take nothing but pictures, leave nothing but footprints."**